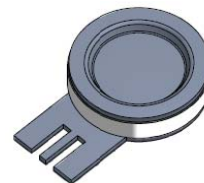


Features

- High Current Handling Capability 40,000A @ 8/20 μ s
- Low Capacitance and Insertion Loss
- Quick Response and Long Service Life
- Moisture sensitivity level: Level 1

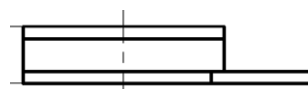
Exterior





Application Information

- AC 90~264V POWER

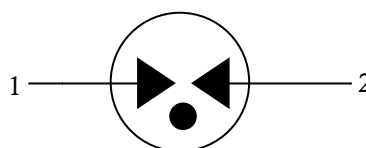
Package (Top View)



Agency Approvals

Icon	Description
RoHS	Compliance with 2011/65/EU
HF	Compliance with IEC61249-2-21:2003
	Mean lead free
	Compliance with UL 1449.Certificate E337906

Schematic Symbol



Electrical Parameter

DC Breakdown Voltage ¹⁾²⁾	100V/s	640-960	V
Impulse Spark-over Voltage	At 1kV/ μ s	for 99 % of measured values ≤ 1400	V
	At 1kV/ μ s	Typical values of distribution ≤ 1300	V
Impulse Spark-over Voltage	At 1.2/50 μ s 6KV	for 99 % of measured values ≤ 1400	V
	At 1.2/50 μ s 6KV	Typical values of distribution ≤ 1300	V
Max. continuous operating voltage	U_C	255	V _{rms}
Nominal discharge current	8/20 μ s	$I_n=20,000$	A
Maximum discharge current	8/20 μ s	$I_{max}=40,000$	A
Follow current at 50/60 Hz	At 255V	100	A _{rms}
Arc Voltage	At 1A	~ 24	V
Insulation Resistance	DC=100V	≥ 1	G Ω
Capacitance at 1MHz	VDC=0.5V	≤ 4	pF
Weight		~ 5	g
Operating And Storage Temperature		-40-90	$^{\circ}$ C

1) At delivery AQL 0.65 level II GB/T 2828.1-2003

2) In ionized mode

3) Terms and waveforms in accordance with IEC 61643-11

Part Numbering System

B UB 801 M - 06
(1) (2) (3) (4) (5)

(1) Bencent

(2) UB means Surge Rating $8/20\mu\text{s}$ @ $I_{\text{max}}=40\text{KA}$

(3) DC Breakdown Voltage, e.g., $801=80 \times 101\text{V}=800\text{V}$

(4) Tolerance of DC Breakdown Voltage, $M=+-20\%$,
 $N=+-30\%$, the Specific tolerance is decided by the table of
“Electrical Parameter”

(5)“-06” means the special structure of this type.

Product Characteristics

Lead Material	Copper
Body Material	Ceramics
Terminal Finish	100% Matte-Tin Plated

Environmental Reliability Characteristics

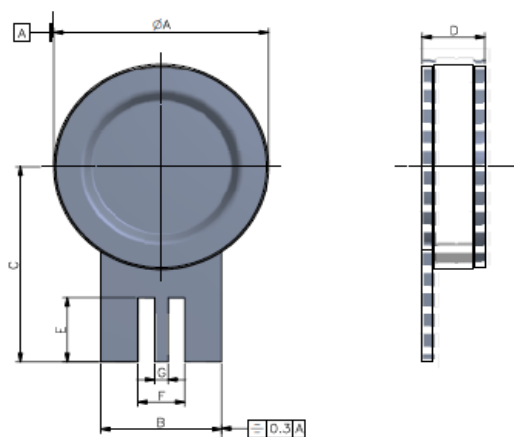
Testing items	Technical standards
High Temperature Storage Test	Temperature: 90°C Time: 2H
Low Temperature Storage Test	Temperature: -40°C Time: 2H
Vibration	Frequency: 10-500Hz Amplitude: 0.15mm Time: 45min
Resistance of soldering heat	Temperature: $260 \pm 5^{\circ}\text{C}$ Time of dip soldering: 10s, 1time

Note: Up-screen program can be specified by customer's request via contacting Bencent service

Solderability Test

Solderability	Solder Pot Temperature:	$245^{\circ}\text{C} \pm 5^{\circ}\text{C}$
	Solder Dwell Time:	4-6 seconds

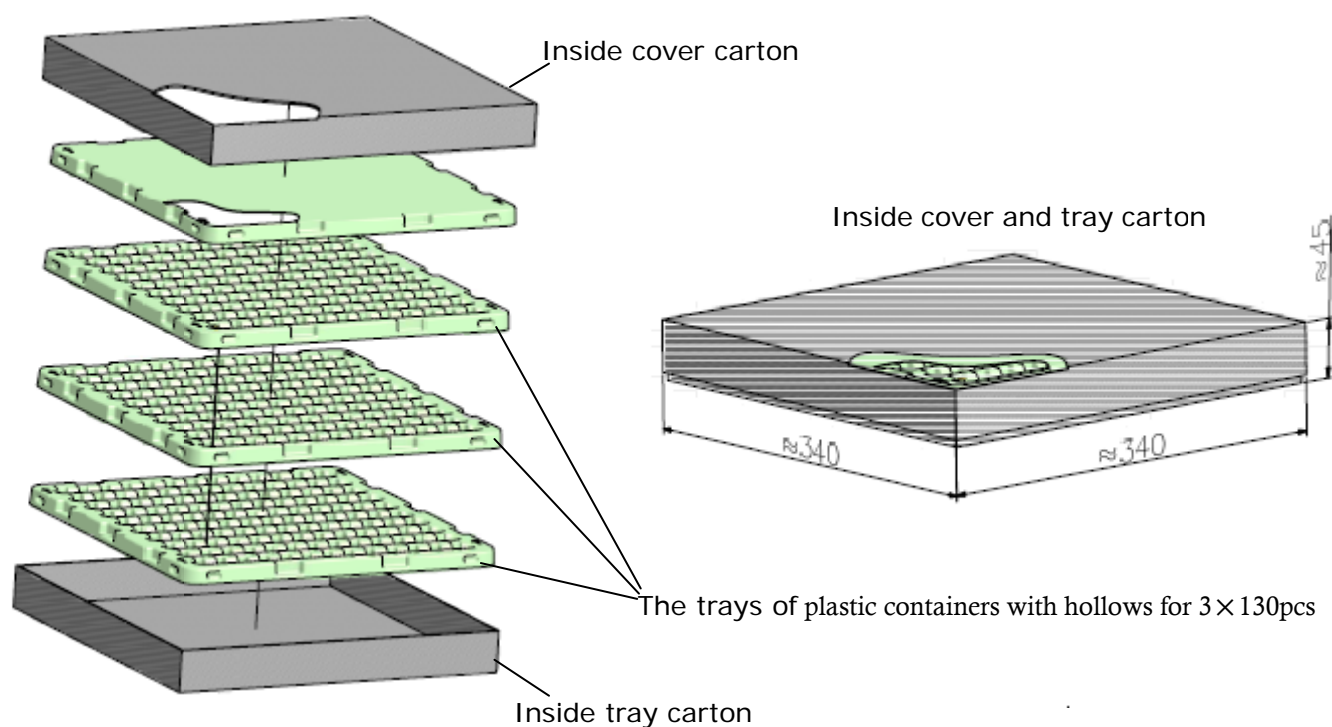
Product Dimensions



REF	mm	inch
A	16 ± 0.4	0.63 ± 0.016
B	9 ± 0.15	0.354 ± 0.006
C	15.2 ± 0.4	0.598 ± 0.016
D	4.5 ± 0.2	0.177 ± 0.008
E	5 ± 0.15	0.197 ± 0.006
F	3.5 ± 0.15	0.138 ± 0.006
G	1 ± 0.15	0.039 ± 0.006

Package Box Information

Outline	Plastic containers (PCS)	Inside Cover and tray carton (PCS)	Outside carton (PCS)	Carton Size(mm)		
				L	W	H
Box	130	390	1560	360	360	220



Remarks: The outside carton has four inside cover and tray cartons for 4 × 390 pcs